

INTRODUCTION

The following Readme provides detailed information on the LiveCycle Enterprise Suite 2 (ES2.5) VMware evaluation virtual appliance.

LiveCycle ES2.5 Virtual Appliance version: 0.0.5

Release Date: December 10, 2010

Version 0.0.5

1) LiveCycle ES2.5 consists of ES2 SP2 as well as three Solution Accelerators versioned 9.5

The download uses Amazon's web service called **CloudFront**: <http://aws.amazon.com/cloudfront>
CloudFront provides comparable download experience for users in North America, Europe and Asia-Pacific because it caches the file on edge servers physically located in these geographies.

Requirements

(If you don't satisfy these requirements, do not proceed)

64-bit capable CPU(s) - you might need to enable "virtualization" in your BIOS.

A minimum 2 GB of RAM is required for the VM, which means your machine should have at least 4 GB of RAM.

VMware Workstation 6.5 or better OR VMware ESX 3.5 or better.

Minimum 20 GB of disk storage available.

Adobe LiveCycle ES2.5 Evaluation Virtual Appliance Readme

Recommended

- 1) A DHCP Server available in your network environment. Your home Linksys, D-Link or Buffalo router usually performs that role.

Value proposition of this appliance

- 1) No install required.
- 2) Very minimal configuration needed.
- 3) Reader Extensions requires importing of a credential using the LiveCycle AdminUI. You can get a sample Reader extensions credential from here : http://www.adobe.com/go/reader_ext_cert

What is not provided currently

- 1) BAM
- 2) LiveCycle Data Services
- 3) LiveCycle Mosaic
- 4) ECM Connectors

INSTRUCTIONS

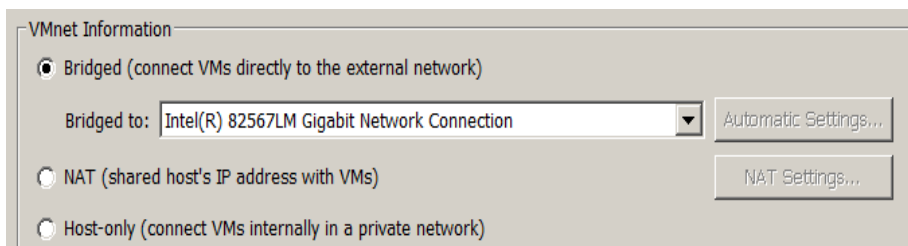
IMPORT THE APPLIANCE TO VMWARE

[Download the appliance.](#)

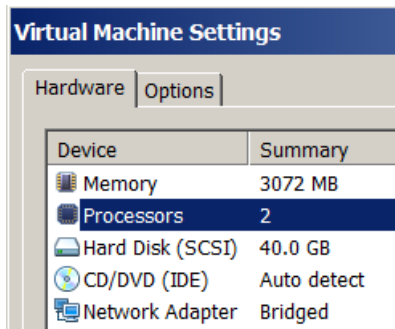
Un-zip it and un-tar it (Winzip, &-zip or WinRAR will do both).

Start VMware Workstation (or VMware Player or VMware Server).

- 1) LiveCycle Workbench is not included in the virtual appliance. You will need LiveCycle Workbench 9.5 installed and running on a Windows machine. That is why it is important that the VM be "visible" across the network. You must ensure that the VMware Workstation is "bridged" to your fastest NIC. You can use VMware Workstation's "Virtual Network Editor" for this.



- 2) Using File-Open, open the **LiveCycleES2SP2.x86_64-0.0.4.vmx** file. Once imported, edit Virtual Machine settings. Adjust number of CPUs to what you have available on your host.
- 3) Adjust memory to what you have available. Give the VM at least 3 GB.
- 4) Delete the floppy drive virtual device if present.



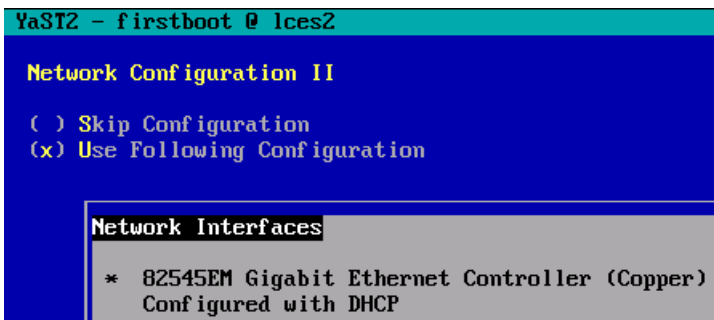
- 5) Start the VM.
- 6) Agree to the Novell SUSE Studio EULA (type in "y" and press Enter).

Adobe LiveCycle ES2.5 Evaluation Virtual Appliance Readme

- 7) In the **YaST2 firstboot** screen, change the Hostname and Domain name to fit your network environment. Uncheck the first checkbox for "Change Hostname via DHCP" but check the second one for "Write Hostname to /etc/hosts"



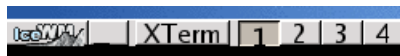
It will detect your network cards and present you a screen like this:



- 8) Tab to 'Next' and proceed
- 9) Log in as user 'livecycle' and password 'password'.



- 10) Click on XTerm to get a command shell.



SET SYSTEM CLOCK

- 1) In the command prompt, switch user to the 'root' user with the command **su root**.
- 2) When prompted for the 'root' user's password, type in "password".
- 3) The prompt will turn red, indicating that you are now GOD.
- 4) Issue the command **date**. If the reported time does not match the current UTC time (Google it), then set it to the current UTC time using the command: **date -s "10 OCT 2010 18:10:05"** (6:10:05 PM on October 10, 2010)

CHECK SYSTEM IP ADDRESS

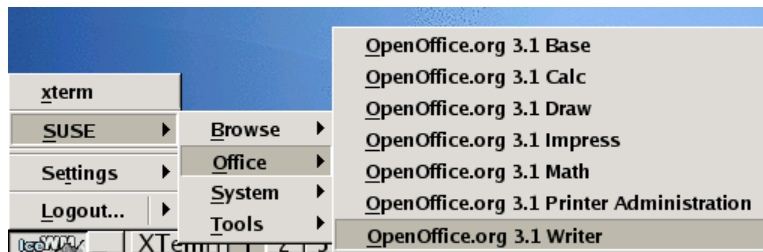
- 5) Run the command '**ifconfig**' to determine the IP address that the VM has picked up from the DHCP Server - **inet addr**). Note it.
- 6) Check available memory to the VM using the command **free -tom**. You should get an output similar to this:

```
chuckycheese:/home/livecycle # free -tom
Mem:      total    used    free   shared    buffers   cached
Swap:    4095      0    4095      0         13     1154
Total:   7109    2997    4112      0         13     1154
```

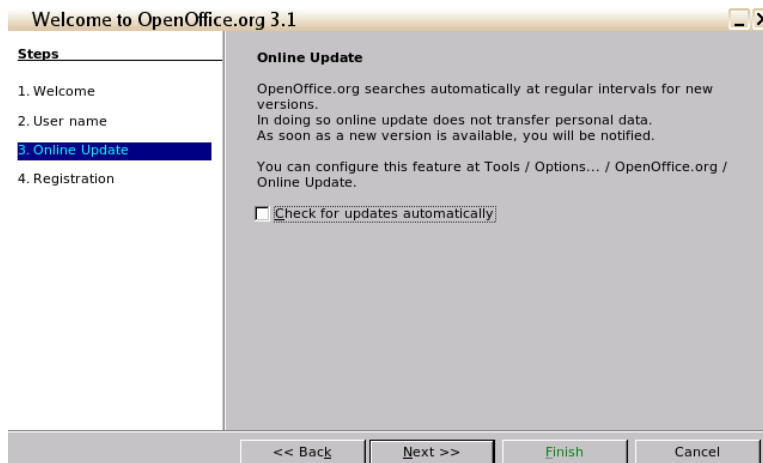
- 7) Stop acting like GOD by typing the command "**exit**". The command prompt should now return to being black. Now you are user 'livecycle'.

CONFIGURE OPENOFFICE

- 14) Start OpenOffice Writer using the menu SUSE->Office->OpenOffice.org 3.1 Writer.



- 15) Do NOT check for updates.



Adobe LiveCycle ES2.5 Evaluation Virtual Appliance Readme

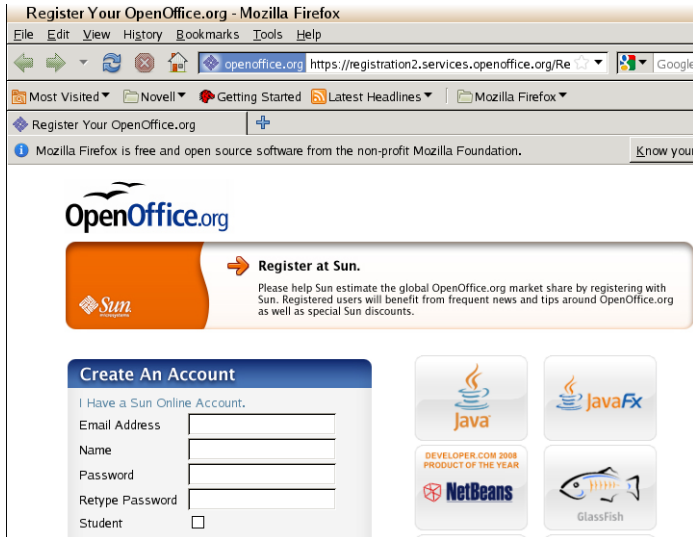
16) Agree to register. Once the web page loads in Firefox, stop and exit Firefox.

Registering is voluntary and without obligation.

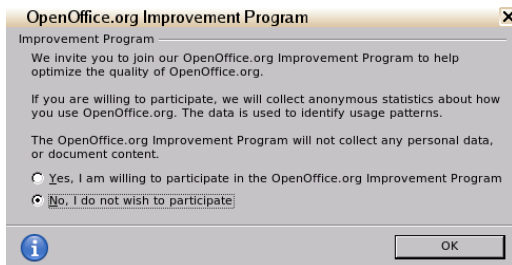
I want to register now

I want to register later

I do not want to register



17) Start Calc. Choose not to participate in the Improvement Program. Address all dialogs properly so that they don't come back to affect proper PDFG operations.



18) Shut down Calc.

19) Start Impress.

20) Shut down Impress.

21) Logout.

USING THE APPLIANCE

NOTE : JBoss takes 5-10 minutes to fully initialize, depending on your hardware.

From your desktop/laptop, access the **LC Admin Console** using the following URL:

Error! Hyperlink reference not valid.

Test FormsIVS : http://<your_ip_address>:8080/FormsIVS

Test OutputIVS : http://<your_ip_address>:8080/OutputIVS

Test Assembler : http://<your_ip_address>:8080/assembler

Test Reader Extensions : http://<your_ip_address>:8080/ReaderExtensions (need to import the RE credential first, using the AdminUI)

Login to Workspace : http://<your_ip_address>:8080/workspace

Login to Content Space : http://<your_ip_address>:8080/contentspace

Login to Rights Management WebUI : http://<your_ip_address>:8080/edc/Login.do

Known problems

- 1) All built-in users such as Sarah Rose and Kara Bowman are marked as "OBSOLETE". Create your own users for processes.

Technology used

This appliance was built with the following technologies:

- 1- Novell SUSE Studio which helps us keep the appliance size small (<http://susestudio.com>)
- 2- Novell SUSE Enterprise Linux 11 JeOS (Just Enough OS) 64-bit (<http://www.novell.com/linux>)
- 3- JBoss 4.2.1 Community Edition with Sun HotSpot JDK 1.6.0_16 64-bit
- 4- MySQL 5.1.67 Community Edition (64-bit)
- 5- LiveCycle ES2 (9.0) SP2

Where things are

JDK : /home/livecycle/jdk1.6.0_16

JDK (32-bit) : /home/livecycle/jdk32_1.6.0_17

JBoss : /home/livecycle/jboss-4.2.0

OpenOffice.org : /opt/openoffice.org3

SUSE Enterprise Linux boot log : /var/log/boot.msg

LiveCycle database (InnoDB) : /var/lib/mysql/ibdata1

InnoDB Transaction logs : ib_logfile0 and ib_logfile1

LiveCycle table definitions : /var/lib/mysql/livecycle/

MySQL configuration settings : /etc/my.cnf

MySQL log : /var/lib/mysql/mysqld.log

Host name : /etc/HOSTNAME, and correspondingly in /etc/hosts

Samba configuration : /etc/samba/smb.conf

Adobe LiveCycle ES2.5 Evaluation Virtual Appliance Readme

How to make system changes

Login root:
`yast`

How to get files in and out

WinSCP : <http://winscp.net> (use SFTP)

How to export the appliance display to your laptop

http://blogs.adobe.com/livecycle/2009/03/redirecting_unix_displays_to_w.html

How to enable SSL for Tomcat/JBoss for Rights Management

Login as livecycle:
`cd /home/livecycle/jdk1.6.0_16/bin`

Create keystore and key with the following command (replace those in red with your own values):
`keytool -genkey -keyalg RSA -validity 3650 -alias livecycle -keystore /home/livecycle/jboss-4.2.0/server/lc_mysql/conf/livecycle.keystore -storepass livecycle -keypass livecycle -dname "cn=lces2.your.company.com, OU=your_department, O=your_company_name, L=your_city, ST=your_state, C=your_two-letter_country_code"`

Configure Tomcat/JBoss

Edit `/home/livecycle/jboss-4.2.0/server/lc_mysql/deploy/jboss-web.deployer/server.xml`

Uncomment the SSL HTTP/1.1 Connector on port 8443 and add the following line:
`keystoreFile="/home/livecycle/jboss-4.2.0/server/lc_mysql/conf/livecycle.keystore"`
`keystorePass="livecycle"`

Re-start JBoss

Login as root
`cd /etc/init.d`
`./jboss stop`

Wait a few minutes

`./jboss start`

How to connect MySQL Administrator GUI tool from your laptop to the appliance

To connect the MySQL Administrator GUI tool from your laptop to the appliance, follow instructions here:
http://blogs.adobe.com/livecycle/2008/10/livecycle_es_turnkey_enabling.html

How to stop the MySQL database instance

Login as root, or switch user to root
`/sbin/service mysql stop`

How to use BareTail to tail the JBoss log real-time

Using Windows Explorer, type in the following URL : `\\<ip_address_of_appliance>\<public folder>`
Point BareTail to `server.log` or `console.log`

Adobe LiveCycle ES2.5 Evaluation Virtual Appliance Readme

Shutting down the appliance

Login to the desktop as root.
Click on the arrow next to "Logout" and choose "Shutdown".

Commonly needed Linux Commands

Configure locale (US English example)
`localedef -i en_US -f UTF-8 en_US.UTF-8`

Start Samba
Login as root
`cd /etc/init.d`
`smbd start`

Stop JBoss
Login as root
`cd /etc/init.d`
`./jboss stop`

Find a file called "smb.conf"
(as root) `find / | grep smb.conf`

Solutions to Known Problems

ERROR [STDERR] java.lang.OutOfMemoryError: PermGen space

Edit `/home/livecycle/jboss-4.2.0/bin/run.sh`
Change from
`JAVA_OPTS="-XX:PermSize=256m -XX:MaxPermSize=256m` to
`JAVA_OPTS="-XX:PermSize=512m -XX:MaxPermSize=512m`

Maintenance

Delete JBoss server logs in `/home/livecycle/jboss-4.2.0/server/lc_mysql/log/`
Old logs will be named in the format `server.log.year-month-day`

Delete logs named `contentservices.log.<date>` in `/home/livecycle/jboss-4.2.0/bin/`